

Plant Operating Software

CD V5.0 or higher

ACS785

Operating, service, alarm and batchjob software

**PC software for the remote operation, monitoring and commissioning of heating, ventilation and district heating plant and remote readout of consumption data.
Windows version**

Use

- Remote management with the OZW775 and OZW771 central communication units:
 - Remote operation and monitoring of Synco™ plants whose devices (primary controller, single room controllers, room units) are connected via Konnex bus
- Remote management with the OCI600 and OCI611 central communication units:
 - Remote operation and monitoring of heating plant whose devices (controllers, pulse adapters, temperature sensors/adapters, digital input modules and relay modules) are connected via LPB (Local Process Bus)
- Remote management with the M-bus central units OZW10 and OZW111:
 - Remote operation and monitoring of M-bus-compatible devices (controllers and meters) in community and district heat substations
 - Acquisition of consumption data of M-bus-compatible meters for consumption cost billing
 - Acquisition of consumption data from radio-based consumption meters of the Siemeca™ AMR system, transmitted to the M-bus central unit OZW10 via the M-bus interface of the WTX16 or WTT16 network node
- Diagnosis and commissioning of LPB controllers with OCI69 and OCI700 service interfaces
- Diagnosis and commissioning of KNX controllers with OCI700 service interface
- Reception of alarms in plants with OZW30 and OCI55

Functions

Operating software

The operating software provides a number of applications, depending on the selected software package.

<i>Application</i>	<i>Description</i>
Plant Diagram	Visualization and remote operation of data points with graphic display of plant
• Standard	Predefined graph and data points of each device
• User-defined	Graph, data points and interconnections as defined by the user
Popcard	Visualization and remote operation of all transmitted data points of the connected devices
• Standard	Predefined pages and data points of each device
• User-defined	Pages and data points as defined by the user
Trend	Acquisition and presentation of the dynamic behavior of selected data points
• Online	With connection to the plant
• Offline	Without connection to the plant
File Transfer	Transmission and storage of files of the central units and memory cards
Parameter Settings	Reading and editing the setting parameters of a device in tabular form
Commissioning Report	Logging the setting values of individual devices, device groups or of the entire plant
Plant Navigation	Plant view in the form of a tree structure
• Device view	The view corresponds to the addressing of the devices
• Plant view	The view is determined by the user
Connections	Type of connections
• Directly	With standard null modem cable or standard USB cable (connector type A to B)
• Modem	Via telephone modems

Alarm software

The alarm software is an overriding program included in all software packages.

<i>Application</i>	<i>Description</i>
Alarm	Alarms from the central unit or the plant are received, stored, displayed and output on a printer
System Report	Information from the central unit or the plant is received, stored, displayed and output on a printer
Connections	Type of connection
• Direct	With standard null modem cable or standard USB cable (connector type A to B)
• Modem	Via telephone modems

Batchjob software

The batchjob software is an overriding program that is available with ACS785.

<i>Function</i>	<i>Description</i>
Execution of Task	Monitoring of all scheduled tasks
Planning and Evaluation of Task	Definition, planning and evaluation of the tasks
Logging of Task	Logging the results of the execution of all scheduled tasks
Plant Navigation	View of the plants in the form of a tree structure
Connections	Type of connection
• Direct	With standard null modem cable or standard USB cable (connector type A to B)
• Modem	Via telephone modems

Service software

The service software has a fixed functionality and is included in all software packages.

<i>Application</i>	<i>Description</i>
Popcard	Visualization and remote operation of all transmitted data points of the connected devices
• Standard	Predefined pages and data points of each device
• User-defined	Pages and data points as defined by the user
Online Trend	Acquisition and presentation of the dynamic behavior of selected data points of the plant with connection to the plant
Parameter Settings	Reading and editing the setting parameters of a device in tabular form
Commissioning Report	Logging the setting parameters of individual devices, device groups or of the entire plant
Plant Navigation	Plant view in the form of a tree structure. The makeup of the tree structure corresponds to the addressing of the devices
Connection	Directly with standard null modem cable or standard USB cable (connector type A to B)

Functions with central units

The functions are dependent on the type of central unit or the type of service interface.

<i>Function</i>	<i>Type of central unit / service interface</i>									
	<i>OZW775</i>	<i>OZW771</i>	<i>OC1600</i>	<i>OC1611</i>	<i>OZW10 3)</i>	<i>OZW111</i>	<i>OZW30</i>	<i>OC155</i>	<i>OC169</i>	<i>OC1700</i>
Plant Diagram	●	●	●	●	●	●			●	●
Popcard	●	●	●	●	●	●			●	●
Trend										
• Online	●	●	●	●	●	●			●	●
• Offline	●		●							
File Transfer	●		●		●					
Parameter Settings	●	●	●	●	●	●			●	●
Commissioning Report	●	●	●	●	●	●			●	●
Plant Navigation	●	●	●	●	●	●			●	●
Alarm	●	●	●	●	●	●	●	●		
System Report	●	●	●	●	●	●	●	●		
Execution of Task	●	●	●	●	●	●			●	●
Planning and Evaluation of Task	●	●	●	●	●	●			●	●
Logging of Task	●	●	●	●	●	●			●	●
Connections										
• Direct	● 2)	● 1)	● 1)	● 1)	● 1)	● 1)	● 1)	● 1)	● 1)	● 2)
• Modem	●	●	●	●	●	●	●	●		

1) With standard null modem cable

2) With standard USB cable (connector type A to B)

3) Version V3.0 or higher

Equipment combinations

Number of plants

With all programs, the number of plants are unlimited.

Number of devices per plant

With the operating software, the number of devices per plant are limited. By contrast, with the alarm software and the service software, the number of devices are unlimited. To limit the number of devices, a credit is available with ACS785. Every device connected to the plant charges that credit with a device-specific value. The number of devices that can be operated are limited by the credit amount.

- The credit with ACS785 is **3900**
- The device-specific credits are as follows:

<i>Type of product</i>	<i>Device-specific credit</i>
OCI600, OCI611, OZW10, OZW111, OZW771, OZW775	10
OCI69, OCI700, WTX16, WTT16, KNX line coupler	0
Synco™ RMU7..., RMH7..., RMB7..., RMK7..., RMS7...	8
Synco™ RLU2..., SEZ2...	8
Synco™ RXB...*	2
Synco™ QAW740	1
SIGMAGYR® RVL..., RVP..., RVD...	8
SONOHEAT®, SONOGR®	3
Siemeca™ WF.21..., WF.26...	2
Siemeca™ WHE21..., WHE36	1
Siemeca™ AEW21.2 and AEW36.2 per input	1
PadpulsM1	1
Third-party device with own Device Description	8
Unknown device without own Device Description	8

* only RXB... with KNX logo

PC hardware

<i>PC component</i>	<i>Minimum requirement</i>
Processor	Pentium-compatible 300 MHz, recommended 600 MHz
RAM	128 MB, recommended 256 MB
Hard disk	1.9 GB free memory (Windows XP) 2.0 GB with 1.0 GB free memory (Windows 2000) Recommended: additional 20 MB free memory per plant
Screen	VGA standard driver 800 × 600, 256 colors Recommended: SVGA standard driver 1028 × 768
Ports	USB 1.1 and higher or serial COM up to 19,200 Baud (directly or via modem) Parallel port for copy protection
Operating system	<ul style="list-style-type: none"> • Windows XP, service pack 1 • Windows 2000, service pack 3
Diskette drive	3½", 1.44 MB, for diskette with log file
CD-ROM or DVD drive	

Modems

Modems are required if communication takes place via the telephone network. The drivers of the modems installed under Windows can be used.

Type summary

ACS785 is supplied as a complete set. Copy protection (dongle) and log file (license) are included.

<i>Type reference</i>	<i>Dongle CMD.01</i>
ACS785	Included

Ordering and delivery

Standard package

Ordering

When ordering, please give type reference **ACS785**.

Delivery

The standard package is supplied as a set in a box, consisting of:

- CD-ROM with
 - operating software
 - service software
 - alarm software
 - batchjob software
 - documentation
- Copy protection CMD.01
- Diskette with key for copy protection
- Installation instructions

Documentation

Software

Type reference	Document and reference number
ACS7...	Installation Instructions CE1G5640xx User Manual CE1U5640en (ACS Operation, ACS Service) User Manual CE1U5641en (ACS Alarm) User Manual CE1U5642en (ACS Batchjob)
ACS700	Data Sheet CE1N5641en
ACS712	Data Sheet CE1N5643en
ACS713	Data Sheet CE1N5644en
ACS715	Data Sheet CE1N5645en
ACS741	Data Sheet CE1N5647en
ACS785	Data Sheet CE1N5648en

Systems

Type of system	Document and reference number
Synco™ 700 / Synco™ RXB HVAC Controls with Konnex Interface	Range Description CE1S3110en
Konnex bus	Data Sheet CE1N3127en
Konnex bus, system description	Basic Documentation CE1P3127en
Local Process Bus (LPB), System Engineering	Basic Documentation CE1P2370E
Local Process Bus (LPB), Basic Engineering Data	Data Sheet CE1N2032E
Local Process Bus (LPB), Basic System Data	Data Sheet CE1N2030E
M-bus System	Basic Documentation CE1P5361en
M-bus System, Basic System Data	Data Sheet CE1N5361E
Siemeca™ AMR system	Data Sheet CE1N2870en

Central units

Type of central unit	Document and reference number
Central communication unit OZW775	Data Sheet CE1N5663en Installation Instructions CE1G5663en Commissioning Instructions CE1C5663en
Central communication unit OZW771	Data Sheet CE1N3117en Basic Documentation CE1P3117en Installation Instructions CE1G3117xx

<i>Type of central unit</i>	<i>Document and reference number</i>
Central communication unit OCI600	Data Sheet CE1N2529E Basic Documentation CE1P2529en User Manual CE1U2529E
Central communication unit OCI611	Data Sheet CE1N2533en Installation Instructions CE1G2533xx
M-bus central unit OZW10	Data Sheet CE1N5362E User Manual CE1U5362E
M-bus central unit OZW111	Data Sheet CE1N5363en Installation Instructions CE1G5363xx
Service interface OCI700	Data Sheet CE1N5655de

Technical design

Operating and service software

General

The operating software and the service software include applications with the following features:

- The following applications can be started several times and operated in parallel:
 - Plant Diagram
 - Popcard
 - Online Trend
 - Offline Trend
 - File Transfer
 - Parameter Settings
 - Commissioning Report
- Several applications can be used simultaneously (e.g. Plant Diagram and Popcard)
- Active applications (e.g. Online Trend) can operate in the background
- User-defined adjustments can be made in the following applications and views:
 - Plant Diagram
 - Popcard
 - Plant View

The software contains a device description of each supported device. The device descriptions define

- the data points with the associated features
- the links to the applications

Plant Diagram

This application permits the graphic presentation of plant (individual devices or groups of devices) with the following choices:

- Automatic updating of process values in the diagram
- Changing setpoints in the diagram
- In the case of user-defined diagrams, links to other diagrams can be established

A library of standard plant diagrams is assigned to each type of device.

For all supported plant diagrams, the library contains:

- The graphic presentation
- The data points to be displayed
- The text to be displayed

The application identifies the selected plant type, automatically assigns the standard plant diagram and shows the current values.

A user-defined plant diagram can be defined for each device:

- By adopting and adjusting the standard plant diagram
- By creating a new plant diagram

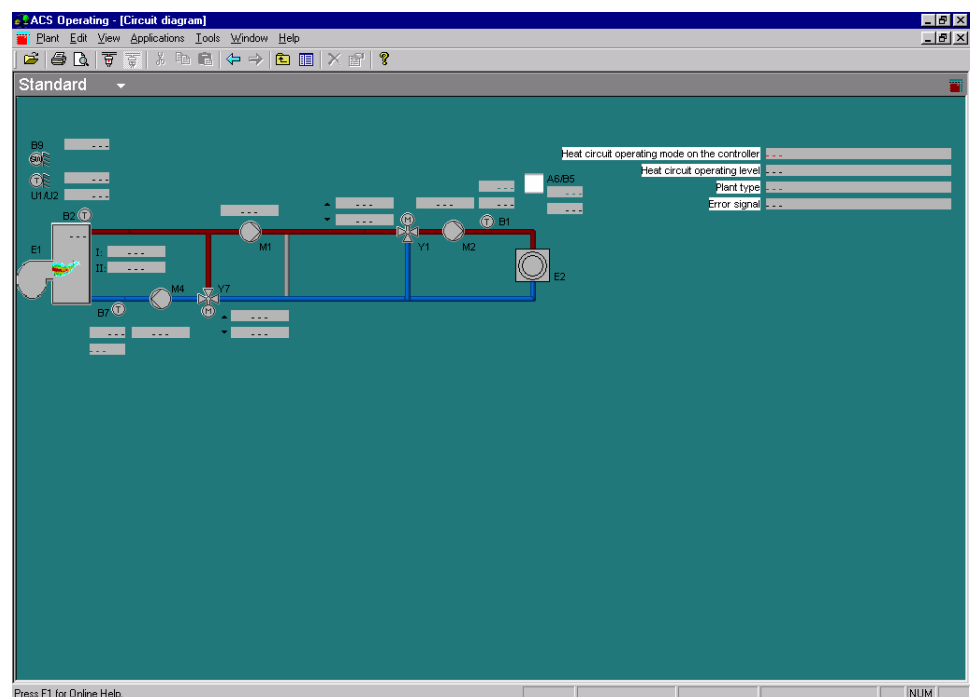
A user-defined plant diagram is created as follows:

- Use external graphic software (e.g. Micrografx Picture Publisher™) for the graphic presentation. The graphs can be adopted in bitmap format
- For the inclusion of data points and links, the application has an Editor integrated

All user-defined plant diagrams will be stored in a separate library. They can also be created without having a connection to the plant (offline).

Switching between the standard and the user-defined plant diagram is possible at any time.

The plant diagrams can be printed out.



This application is used to visualize the transmitted data points of each device and their values.

Each type of device uses standard popcards. Makeup and contents of the operating pages are predefined

User-defined popcards can be created for each device and each node. Data points of all subordinate devices can be added to popcards that are assigned to a node. Standard and user-defined popcards can be copied to devices of the same type or to superposed nodes.

The user-defined popcards offer the following features:

- They can consist of several user-defined pages
- Each page can be subdivided into several user-defined sections
- Freely selectable data points and separators can be assigned to the popcards, the pages and the sections

Switching between the standard and the user-defined popcards is possible at any time.

Each selected page is automatically updated. The updating process will be visualized.

The operating pages can be printed out and exported as an ASCII file.

N...	Line no.	Address	Data point	Value	Unit
● 1	51	Controller,12:0:1	Relay test	Inactive	
○ 2	53	Controller,12:0:1	Plant type	Plant type 9	
○ 3	54	Controller,12:0:1	Room temp setpoint current	10.0	°C
○ 4	56	Controller,12:0:1	Dhw temp actual value>	°C
○ 5	57	Controller,12:0:1	Boiler temp actual value	56.9	°C
○ 6	58	Controller,12:0:1	Boiler sequence flow temp actual value	73.7	°C
○ 7	62	Controller,12:0:1	Room unit type>	
● 8	63	Controller,12:0:1	Room unit type	Digital	
○ 9		Controller,12:0:1	Remote telephone switch	Open	
● 10	64	Controller,12:0:1	Heating curve parallel displacement	0.0	°C
● 11	65	Controller,12:0:1	Room temp gain factor	4	
● 12	67	Controller,12:0:1	Room temp switching differential	1.0	°C
● 13	68	Controller,12:0:1	Flow temp min limitation	8	°C
● 14	69	Controller,12:0:1	Flow temp max limitation	80	°C
● 15	70	Controller,12:0:1	Building construction	Light	
● 16	71	Controller,12:0:1	Heating curve adaptation	Operative	
● 17	72	Controller,12:0:1	Pump type	Boiler/heating circuit pump	

Trend

This application allows any data points of a plant to be logged.

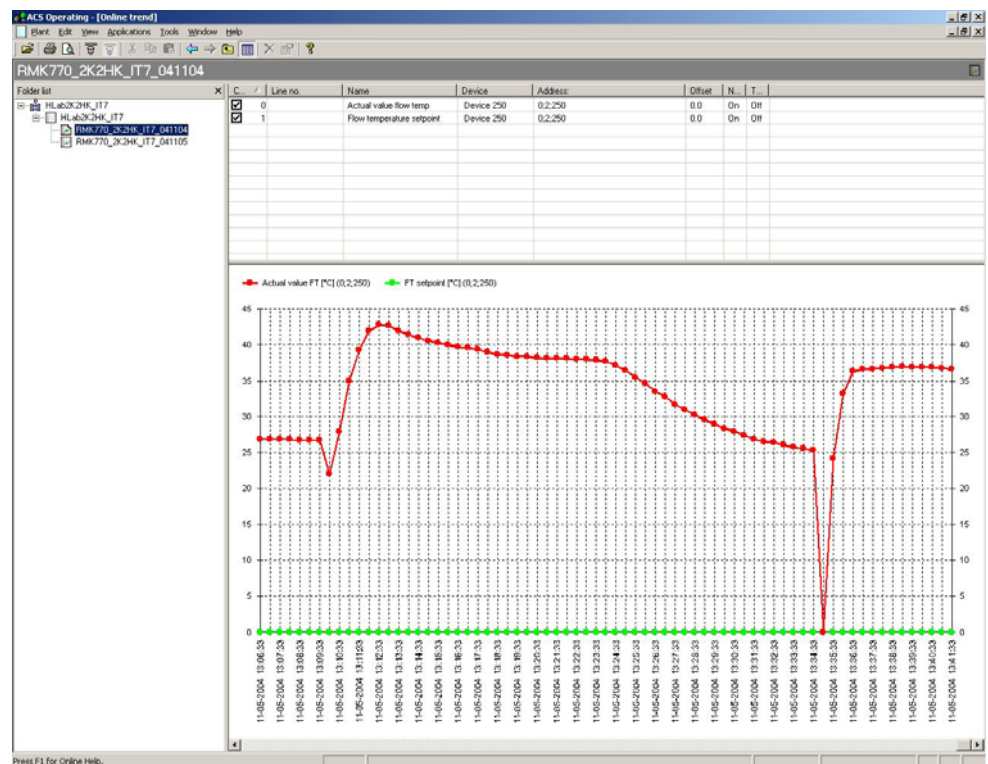
The description, the selected data points of all devices of the plant and the sample interval are defined in the trend definition. Start and end of logging can be defined in the offline trend.

In trend logging, the cyclically queried data are stored and graphically presented. Earlier trend logging can be graphically shown again at any time.

The Trend application can be performed online or offline:

- Online Trend: The connection between plant and PC is established. All acquired data are stored directly on the PC. The graphic presentation of trend logging takes place online
- Offline Trend: There is no connection between plant and PC. All acquired data will be downloaded and stored on the memory card in the central unit. The graphic presentation of logging is made after uploading logging

Trend logging can be printed out and exported as an ASCII file.



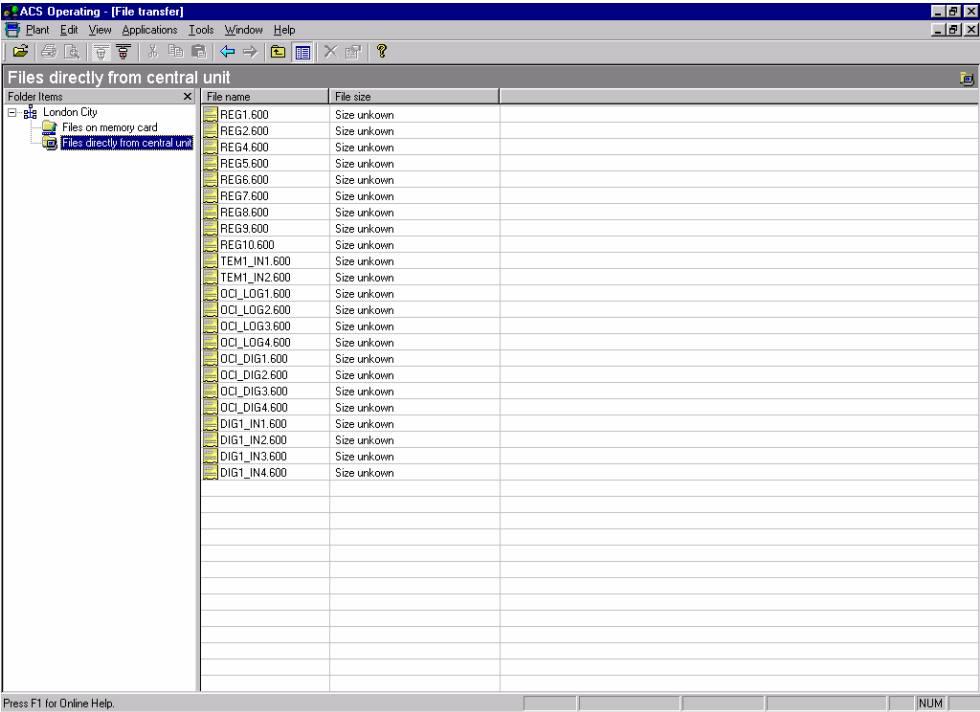
File Transfer

This application makes possible the exchange of files between the central unit and a PC. It enables

- files to be copied from the central unit or its memory card to the PC
- files to be copied from the PC to the central unit's memory card
- the memory card to be formatted

For visualizing the data, a selectable Editor that is suited for ASCII files can be started.

File transfer can be automated by making use of the batchjob software.



Parameter Settings

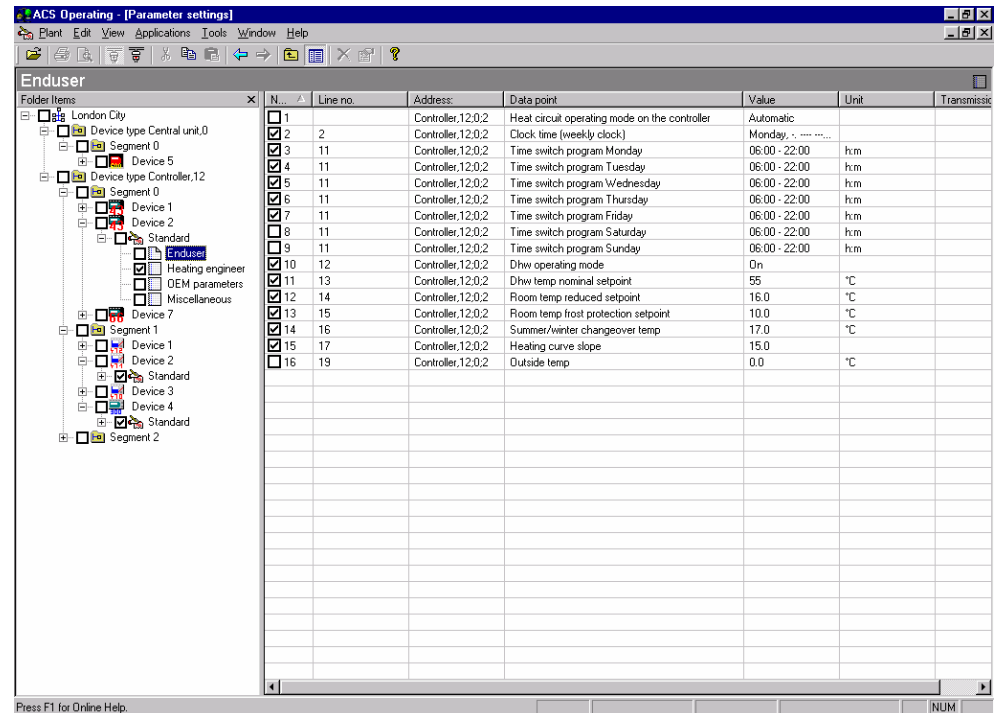
This application is used to download, upload or compare the settings of the connected devices.

The settings can be

- stored as a parameter set
- compared with a stored parameter set
- compared with the standard parameter set
- overwritten with a stored parameter set
- overwritten with the standard parameter set

The parameter sets can be edited either online or offline. The individual data points of a parameter set can be selected. The transmission result of uploading, downloading or comparing is displayed online.

The parameter set can be printed out and exported as an ASCII file.



N...	Line no.	Address	Data point	Value	Unit	Transmissi
<input type="checkbox"/>	1	Controller,12.0.2	Heat circuit operating mode on the controller	Automatic		
<input type="checkbox"/>	2	Controller,12.0.2	Clock time (weekly clock)	Monday, - - - - -		
<input checked="" type="checkbox"/>	3	Controller,12.0.2	Time switch program Monday	06:00 - 22:00	h.m	
<input checked="" type="checkbox"/>	4	Controller,12.0.2	Time switch program Tuesday	06:00 - 22:00	h.m	
<input checked="" type="checkbox"/>	5	Controller,12.0.2	Time switch program Wednesday	06:00 - 22:00	h.m	
<input checked="" type="checkbox"/>	6	Controller,12.0.2	Time switch program Thursday	06:00 - 22:00	h.m	
<input checked="" type="checkbox"/>	7	Controller,12.0.2	Time switch program Friday	06:00 - 22:00	h.m	
<input checked="" type="checkbox"/>	8	Controller,12.0.2	Time switch program Saturday	06:00 - 22:00	h.m	
<input checked="" type="checkbox"/>	9	Controller,12.0.2	Time switch program Sunday	06:00 - 22:00	h.m	
<input checked="" type="checkbox"/>	10	Controller,12.0.2	Dhw operating mode	On		
<input checked="" type="checkbox"/>	11	Controller,12.0.2	Dhw temp nominal setpoint	55	°C	
<input checked="" type="checkbox"/>	12	Controller,12.0.2	Room temp reduced setpoint	16.0	°C	
<input checked="" type="checkbox"/>	13	Controller,12.0.2	Room temp frost protection setpoint	10.0	°C	
<input checked="" type="checkbox"/>	14	Controller,12.0.2	Summer/winter changeover temp	17.0	°C	
<input checked="" type="checkbox"/>	15	Controller,12.0.2	Heating curve slope	15.0		
<input checked="" type="checkbox"/>	16	Controller,12.0.2	Outside temp	0.0	°C	

Commissioning Report

This application is used to log the setting values of individual devices, groups of selected devices or of entire plants.

The data points of the selected devices are stored with data point designation, value, unit and status.

The commissioning report can be printed out and exported as an ASCII file.

ACS Operating - [Commissioning Report]

Plant Edit View Applications Tools Window Help

Enduser

Folder Items

London City

- Installation
 - Commissioning report: 2002-01-08
 - Device 3
 - Enduser
 - Switching program
 - Holiday period 1-8
 - Heating engineer
 - Service
 - Miscellaneous

No.	Line no.	Address	Data point	Value	Unit
1		Controller,12;1;3	Heat circuit oper...	Standby	
2		Controller,12;1;3	Manual operation	Off	
3		Controller,12;1;3	Room temp setp...	0.0	°C
4		Controller,12;1;3	Analog heating ...	41.5	°C
5		Controller,12;1;3	Analog heating ...	61.5	°C
6		Controller,12;1;3	Outside temp	16.9	°C
7		Controller,12;1;3	Flow temp actua...	44.6	°C
8		Controller,12;1;3	Boiler temp actu...	---	°C
9		Controller,12;1;3	Room temp actu...	---	°C
10	1	Controller,12;1;3	Room temp nomi...	20.0	°C
11	2	Controller,12;1;3	Room temp redu...	---	°C
12	3	Controller,12;1;3	Room temp setp...	---	°C
13	14-17	Controller,12;1;3	Clock time	---	
14		Controller,12;1;3	Error signal	---	

Press F1 for Online Help.

Filter ON

NUM

Alarm software

General

The alarm software consists of the following applications for the reception and further handling of alarms and of the plant's operating status:

- Alarm
- System Report

Alarm

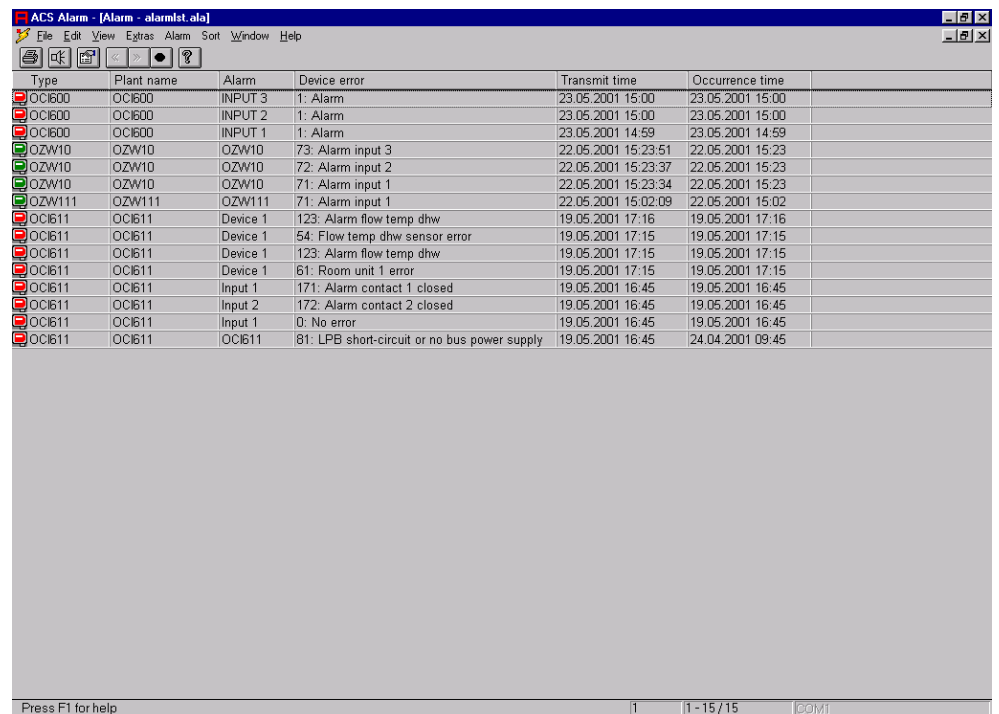
Every alarm received from the plant is entered in an alarm list.

The alarm reception sequence can be configured:

- Acoustic signal
- A popup window opens. The alarm is entered in the alarm list only when the window is closed
- Printout on a printer
- Any combination of the 3 choices

The user can select the columns of the alarm list. The column designations and the arrangement of the individual columns can be configured on a user-specific basis.

The entire alarm list can be exported as an ASCII file. Also, to facilitate further handling in other programs, the alarms received are automatically exported to an ASCII file.



The screenshot shows the 'ACS Alarm - [Alarm - alarmlist.ala]' window. It features a menu bar (File, Edit, View, Extras, Alarm, Sort, Window, Help) and a toolbar with icons for file operations and alarm settings. Below the toolbar is a table with the following columns: Type, Plant name, Alarm, Device error, Transmit time, and Occurrence time. The table contains 15 rows of alarm data. At the bottom of the window, there is a status bar with the text 'Press F1 for help', a page indicator '1', a range indicator '1 - 15 / 15', and a date indicator '2001'.

Type	Plant name	Alarm	Device error	Transmit time	Occurrence time
OC1600	OC1600	INPUT 3	1: Alarm	23.05.2001 15:00	23.05.2001 15:00
OC1600	OC1600	INPUT 2	1: Alarm	23.05.2001 15:00	23.05.2001 15:00
OC1600	OC1600	INPUT 1	1: Alarm	23.05.2001 14:59	23.05.2001 14:59
OZW10	OZW10	OZW10	73: Alarm input 3	22.05.2001 15:23:51	22.05.2001 15:23
OZW10	OZW10	OZW10	72: Alarm input 2	22.05.2001 15:23:37	22.05.2001 15:23
OZW10	OZW10	OZW10	71: Alarm input 1	22.05.2001 15:23:34	22.05.2001 15:23
OZW111	OZW111	OZW111	71: Alarm input 1	22.05.2001 15:02:09	22.05.2001 15:02
OC1611	OC1611	Device 1	123: Alarm flow temp dhw	19.05.2001 17:16	19.05.2001 17:16
OC1611	OC1611	Device 1	54: Flow temp dhw sensor error	19.05.2001 17:15	19.05.2001 17:15
OC1611	OC1611	Device 1	123: Alarm flow temp dhw	19.05.2001 17:15	19.05.2001 17:15
OC1611	OC1611	Device 1	61: Room unit 1 error	19.05.2001 17:15	19.05.2001 17:15
OC1611	OC1611	Input 1	171: Alarm contact 1 closed	19.05.2001 16:45	19.05.2001 16:45
OC1611	OC1611	Input 2	172: Alarm contact 2 closed	19.05.2001 16:45	19.05.2001 16:45
OC1611	OC1611	Input 1	0: No error	19.05.2001 16:45	19.05.2001 16:45
OC1611	OC1611	OC1611	81: LPB short-circuit or no bus power supply	19.05.2001 16:45	24.04.2001 09:45

System Report

The system report is used to monitor plant operation.

It contains general information about the plant, such as type of central unit, phone number of the plant and plant name. Also, a system report of the OCI600 central unit can transmit alarms, meter readings or the number of operating hours. The system report can be output on a printer.

Type	Transmit time	Phone number	Plant name
OCI600	08.01.2002 11:05	041 724 5121	OCI600
OCI600	08.01.2002 11:35	041 724 5121	OCI600
OCI600	08.01.2002 13:44	041 724 5121	OCI600

Press F1 for help 1 1 - 3 / 3 COM1

Batchjob software

General

The batchjob software includes applications for automatic control and logging of plant data:

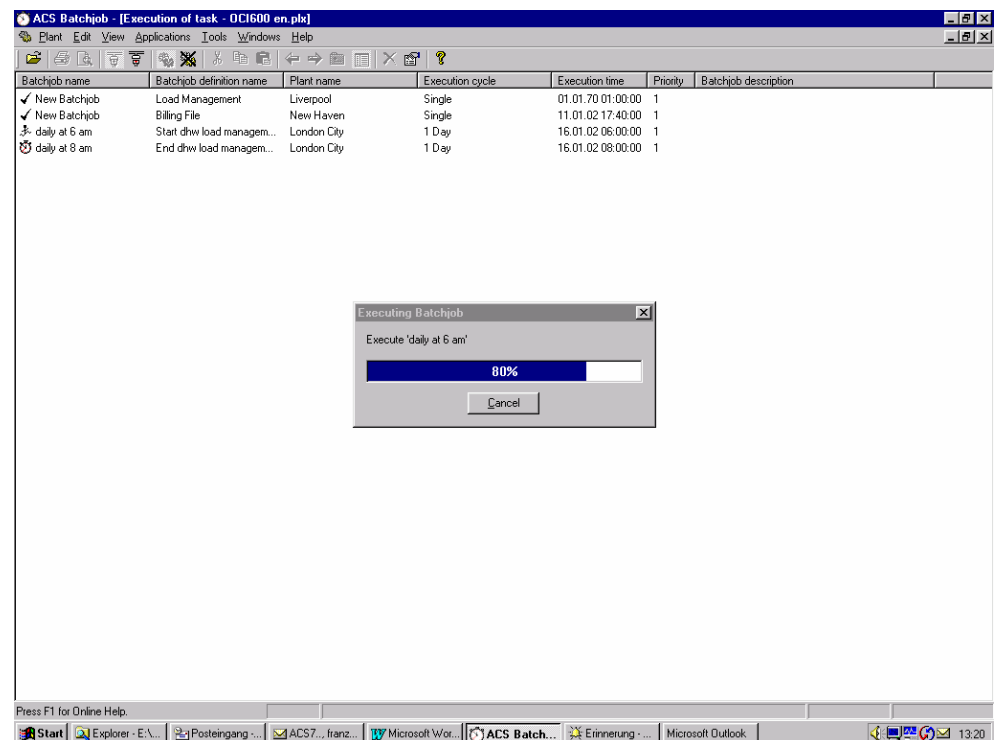
- Execution of Task
- Planning and Evaluation of Task
- Logging of Task

Execution of Task

The Execution of Task permits monitoring of all planned tasks. The tasks can be performed on different plants. Possible tasks are the one-time scheduled or periodic uploading and downloading of data points and uploading of files.

The Execution of Task can always be started or stopped. Individual tasks can be disabled or enabled. A task can immediately be executed.

The state of the task and the result of the last execution are visualized by means of symbols.

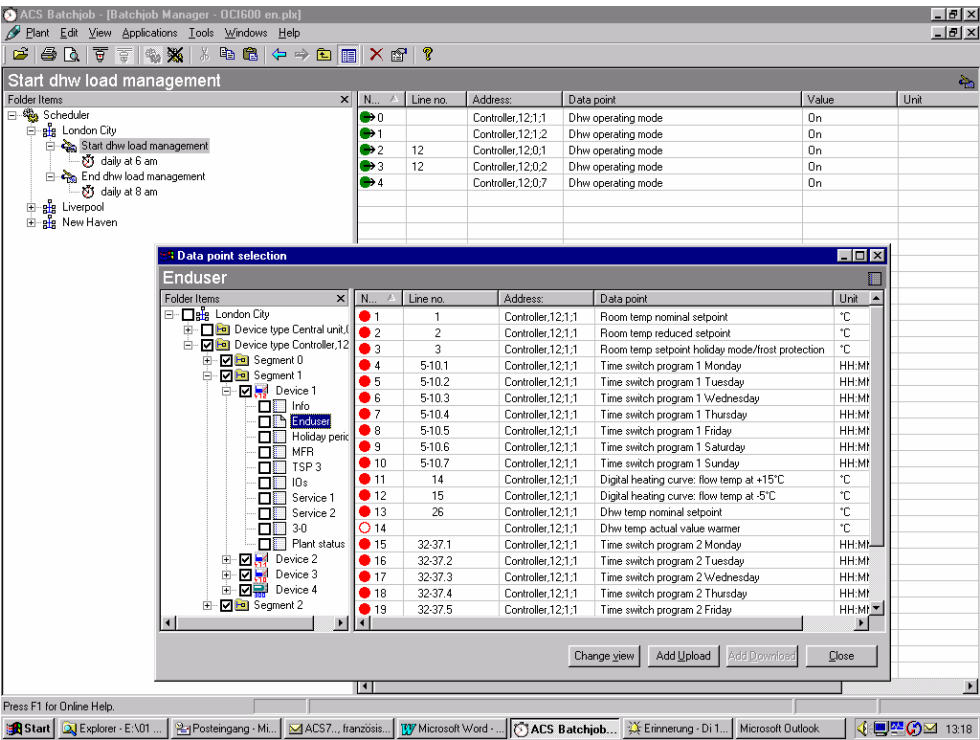


Planning and Evaluation
of Task

This application is used for planning tasks and for their evaluation.

The Planning and Evaluation of Task comprises a description, the time of execution, and a number of instructions. Execution can take place once at a certain time, or periodically. Instructions include downloading and uploading data points and uploading files. The result of the task can automatically be exported.

A task is always restricted to one plant.



Logging of Task

This application logs the processes taking place in the Logging of Task. All automatically and manually executed tasks will be included.

ACS Batchjob - [Task logging file - OCI600 en.plx]

daily at 6 am

Folder Items	Nr.	Date/Time	Log entry	Value	Info
Scheduler	0	15.01.02 13:20:02	Batchjob started (manual)	daily at 6 am	Start dhww load management
London City	1	15.01.02 13:20:02	Plant opened		C:\ACS\Plants\OCI600 en.plx
Start dhww load management	2	15.01.02 13:20:02	Connecting		London City
daily at 6 am	3	15.01.02 13:20:02	Connection established		
End dhww load management	4	15.01.02 13:20:03	Download data point	On	Dhww operating mode
Liverpool	5	15.01.02 13:20:05	Data point was successfully downl...	On	
New Haven	6	15.01.02 13:20:05	Download data point	On	Dhww operating mode
	7	15.01.02 13:20:07	Data point was successfully downl...	On	
	8	15.01.02 13:20:07	Download data point	On	Dhww operating mode
	9	15.01.02 13:20:09	Data point was successfully downl...	On	
	10	15.01.02 13:20:09	Download data point	On	Dhww operating mode
	11	15.01.02 13:20:51	Data point was successfully downl...	On	
	12	15.01.02 13:20:51	Download data point	On	Dhww operating mode
	13	15.01.02 13:20:53	Data point was successfully downl...	On	
	14	15.01.02 13:20:53	Disconnecting		London City
	15	15.01.02 13:21:02	Plant disconnected		
	16	15.01.02 13:21:03	Batchjob stopped (manual)		daily at 6 am

Press F1 for Online Help.

Start Explorer - E:\01 Bedi... ACS7... französische... Microsoft Word - _N5... ACS Batchjob - [... Erinnerung - Di 15.01... 13.22

General functions

Plant Navigation

For plant navigation, the plant is presented in the form of a tree structure. The following applications support this mode of presentation:

- Plant Diagram
- Popcard
- Online Trend
- Offline Trend
- Parameter Settings
- Commissioning Report
- Planning and Evaluation of Task
- Logging of Task

The following views can be selected:

- Device view
- Plant view

The device view shows the plant in accordance with device addressing.

In the plant view, the tree structure can be defined on a user-specific basis. The tree structure is defined by including nodes. The devices can be assigned to the nodes in any manner desired.

Switching between device view and plant view is possible at any time. A description can be added to each device and each node.

The plant view in the form of a tree structure can either be shown or hidden.

The screenshot displays the ACS Operating - [Popcard] software interface. On the left, a tree structure shows the plant hierarchy under 'Enduser', including folders like 'London City', 'Hide Park Lane', 'Building 27', 'Building 29', 'Building 35', 'Standard', 'Info', 'Holiday period 1-8', 'MFR', 'TSP 3', 'IOs', 'Service', '1-4', and 'Plant status'. The main area shows a table with columns: No., Line no., Address, Data point, Value, and Unit. The table lists various data points such as 'Room temp nominal setpoint', 'Room temp reduced setpoint', 'Room temp setpoint holiday mode/frost protection', 'Time switch program 1 Monday' through 'Time switch program 2 Sunday', 'Dhw temp nominal setpoint', 'Dhw temp actual value warmer', and 'Error signal'.

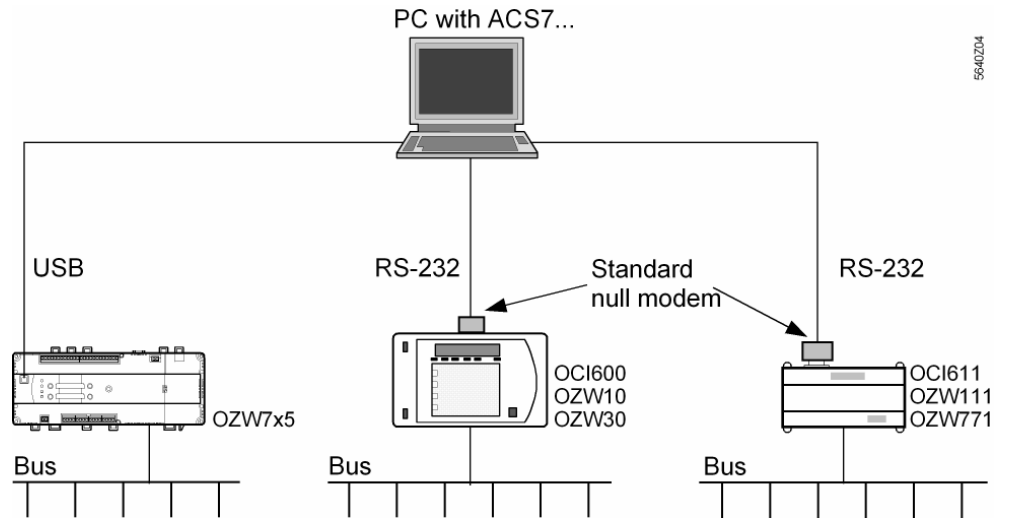
No.	Line no.	Address	Data point	Value	Unit
1	1	Regler.12.1.2	Room temp nominal setpoint	20.0	°C
2	2	Regler.12.1.2	Room temp reduced setpoint	14.0	°C
3	3	Regler.12.1.2	Room temp setpoint holiday mode/frost protection	10.0	°C
4	5-10.1	Regler.12.1.2	Time switch program 1 Monday	06:00 - 22:00	h:m
5	5-10.2	Regler.12.1.2	Time switch program 1 Tuesday	06:00 - 22:00	h:m
6	5-10.3	Regler.12.1.2	Time switch program 1 Wednesday	06:00 - 22:00	h:m
7	5-10.4	Regler.12.1.2	Time switch program 1 Thursday	06:00 - 22:00	h:m
8	5-10.5	Regler.12.1.2	Time switch program 1 Friday	06:00 - 22:00	h:m
9	5-10.6	Regler.12.1.2	Time switch program 1 Saturday	06:00 - 22:00	h:m
10	5-10.7	Regler.12.1.2	Time switch program 1 Sunday	06:00 - 22:00	h:m
11	14	Regler.12.1.2	Dhw temp nominal setpoint	55	°C
12		Regler.12.1.2	Dhw temp actual value warmer	0.0	°C
13	17-22.1	Regler.12.1.2	Time switch program 2 Monday	05:00 - 22:00	h:m
14	17-22.2	Regler.12.1.2	Time switch program 2 Tuesday	05:00 - 22:00	h:m
15	17-22.3	Regler.12.1.2	Time switch program 2 Wednesday	05:00 - 22:00	h:m
16	17-22.4	Regler.12.1.2	Time switch program 2 Thursday	05:00 - 22:00	h:m
17	17-22.5	Regler.12.1.2	Time switch program 2 Friday	05:00 - 22:00	h:m
18	17-22.6	Regler.12.1.2	Time switch program 2 Saturday	05:00 - 22:00	h:m
19	17-22.7	Regler.12.1.2	Time switch program 2 Sunday	05:00 - 22:00	h:m
20		Regler.12.1.2	Error signal	No error	

Connections

Communication with the central units can take place either directly or via modem.

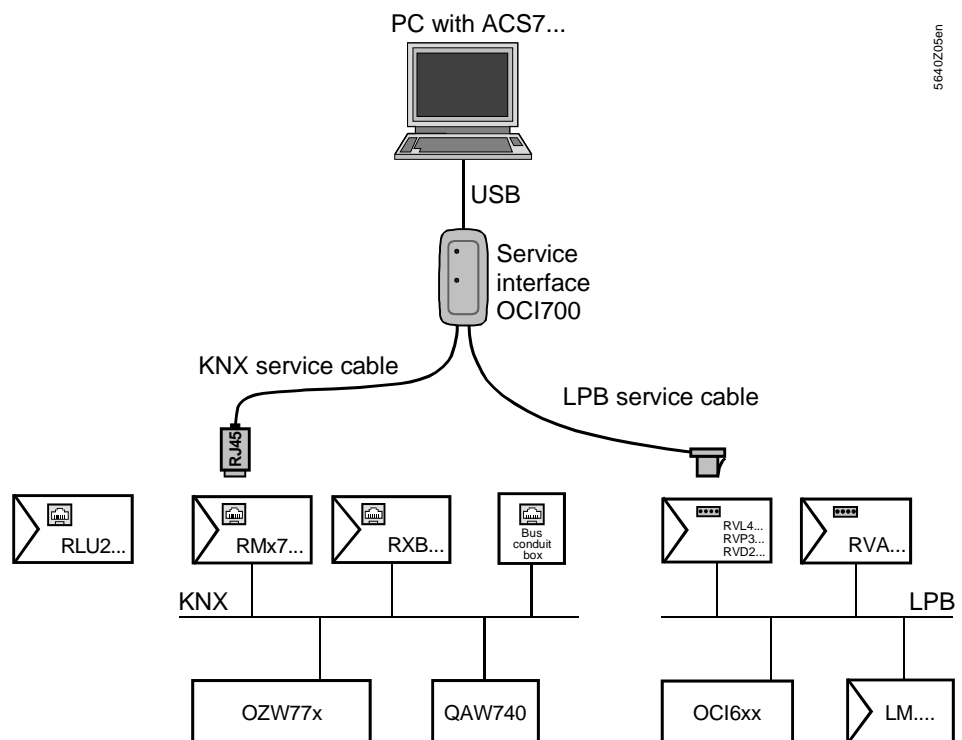
Direct connection for plant supervision

In the case of a direct connection, a standard null modem or standard USB cable is required between central unit and PC.



5640Z04

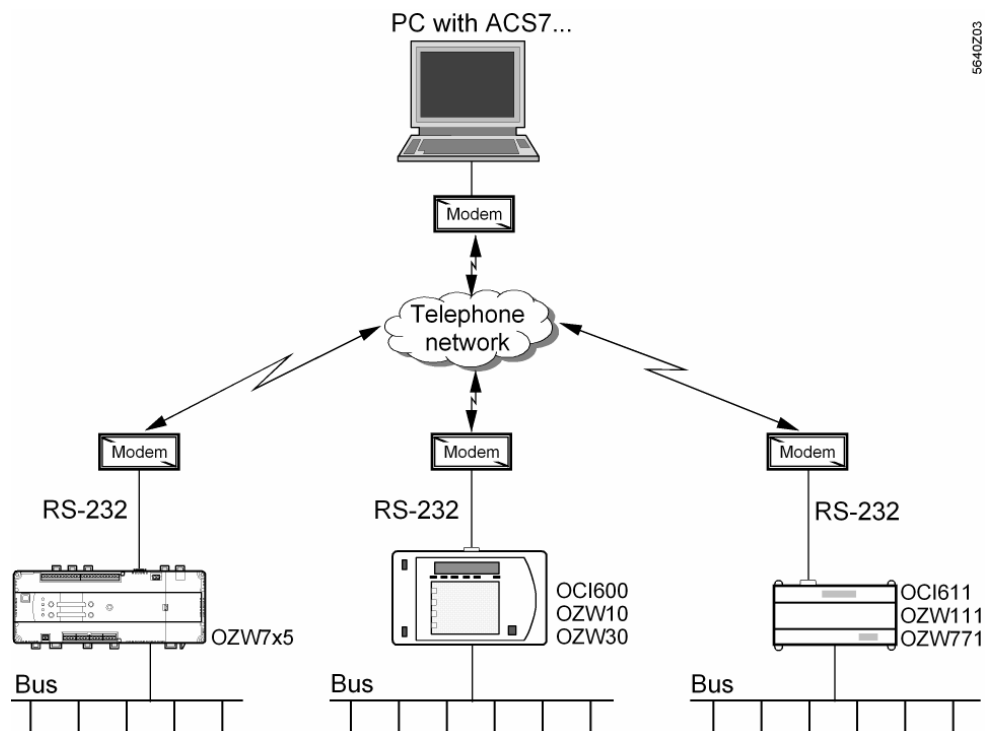
Direct connection for service



5640Z05en

Telephone connection

In the case of a connection via the telephone network, a Hayes-compatible modem is required on each side.



For more detailed information about RS-232 cables, standard null modems and modems, refer to the various pieces of Basic Documentation.

Commissioning notes

The software must be installed according to the Installation Instructions supplied with the CD.

General note

The programs offer the standard Windows Help functions, so a description of the commands and menus is available at any time.